

ANIMAL BODY PARTS

- Do you know these animals?
- Read and complete

stomp

elephant

eyes

trunk

ears

grey



My favourite animal is an _____ It is _____ It has a big body, two small _____ It has a long _____ And two big _____ It's herbivore. It eats grass and fruit. It can't fly and it can _____

climb

leaves

paws

black

panda

herbivore

My favourite animal is a _____ It is _____ and white. It has four _____ It lives in China. It's _____ It eats bamboo _____ It can _____ I like it because it's so cute.



teeth

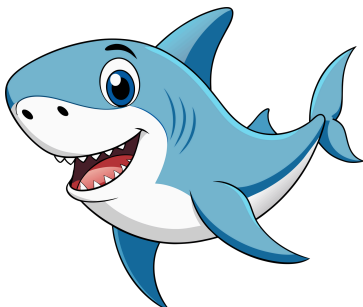
carnivore

dangerous

shark

tail

swim



My favourite animal is a _____ It is _____ It can _____ quickly in the sea to eat other fish. It has got sharp _____ and a _____ It's so _____ because it sometimes eat human.