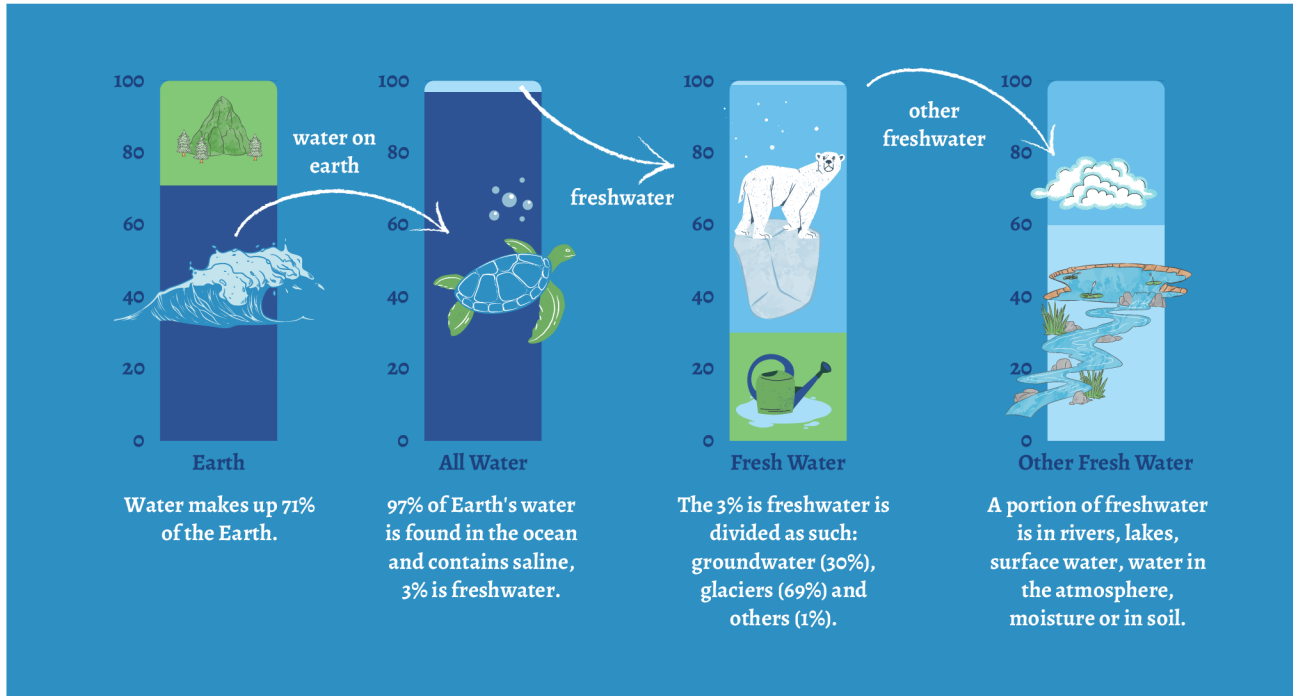


Water Distribution on Earth



Water makes up 71% of the Earth and can be found in many different places. Use bar graphs to show the distribution of water around the world. Add images, arrows, labels, and other elements on the graphs to highlight information.

Understanding Water Distribution

Fill in the Blanks:

- Fill in the blanks using the words provided:
- (freshwater, saltwater, glaciers, groundwater, oceans, lakes)

- The largest amount of water on Earth is found in the _____.
- About 97% of Earth's water is _____.
- _____ holds the majority of freshwater on Earth.
- Water stored beneath the Earth's surface is called _____.
- Only a small percentage of freshwater is found in _____ and rivers

Match the Percentages

Match the correct percentage of water to its source:

Water Source	Percentage
Oceans	a. 68.7%
Glaciers and Ice Caps	b. 0.3%
Groundwater	c. 97%
Freshwater in Lakes/Rivers	d. 30%

True or False

Write True or False for the following statements:

- Oceans contain most of the Earth's saltwater. _____
- All freshwater is found in rivers and lakes. _____
- Groundwater is an important source of drinking water. _____
- Ice caps and glaciers hold more freshwater than rivers and lakes combined. _____
- Humans can easily use all the freshwater stored in glaciers. _____
- The majority of Earth's freshwater is not easily accessible. _____
- Desalination is a process used to make saltwater drinkable. _____
- Lakes and rivers hold less than 1% of Earth's total water. _____

Short Answer Questions

Write True or False for the following statements:

1. Why is only a small percentage of Earth's water usable for humans?

.....

.....

.....

2. How do glaciers contribute to Earth's freshwater storage?

.....

.....

.....

3. What is the importance of groundwater in daily life? Give two examples.

.....

.....

.....

Critical Thinking

Scenario: Imagine your town is facing a water shortage. Suggest three ways your community can conserve water.

.....

.....

.....

.....

.....

.....